



Global Health
Supply Chain Summit

[ABSTRACT 97
[TRACK 12]
[14/11/24]

LAGOS, NIGERIA ~ NOVEMBER 12-15

2024

**Catalyzing Collaborative Health Sector Innovation:
Empowering Private Sector for Sustainable Impact**

**VALUE CHAIN INNOVATIONS FOR UNIVERSAL HEALTH
COVERAGE**

A woman with her hair in braids, wearing a black top and a colorful patterned skirt, carries a young child on her back. The child is wrapped in a green and patterned cloth. They are standing in a dirt courtyard in front of a brick building. Other people are visible in the background, some wearing face masks.

VILLAGE
REACH.
X

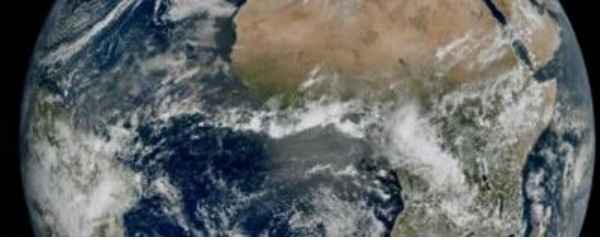
Outsourced Transport Resource Centre (OTRC) Solution

OTRC Lead: Angelina Cumba

Outsourcing Logistic Expert & OTRC Team Lead

VillageReach

Objective



1. Understanding the challenges and opportunities of integrating the private sector into public health supply chains, specifically focusing on outsourced transportation.



2. Learn the OTRC's approach and its demonstrated success in improving health care delivery through public-private partnerships, highlighting key results and lessons learned.



3. Identify the appropriate OTRC services and support mechanisms for different stages of the outsourcing journey based on specific organizational needs and context.

VillageReach 2030 Goal

To reduce inequities in
access to quality primary
health care among the most
under-reached communities



Our Approach

Creating sustainable impact through collaboration with the public sector, private sector, and communities.

1

We start by **learning** what people need from the health care system.

2

Applying their insights, we **co-develop and evaluate** solutions in the countries where we work. We align solutions with government priorities, plans and policies.

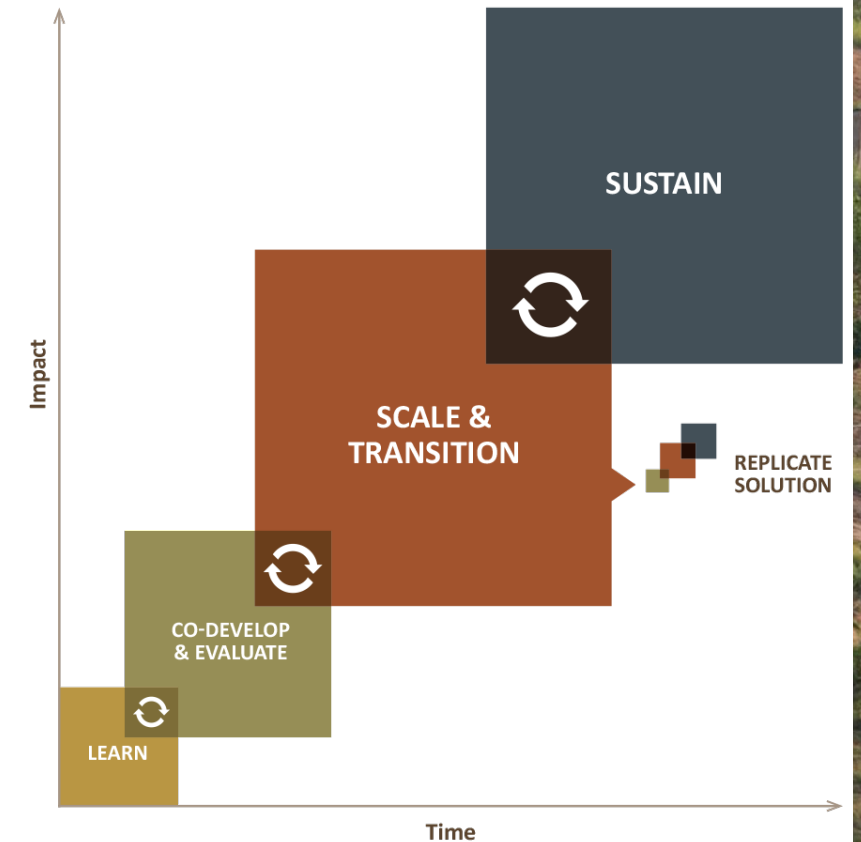
3

We collaborate with government, partners and the private sector to **scale and replicate** proven solutions in an efficient and sustainable way and **transition our support** for these solutions.

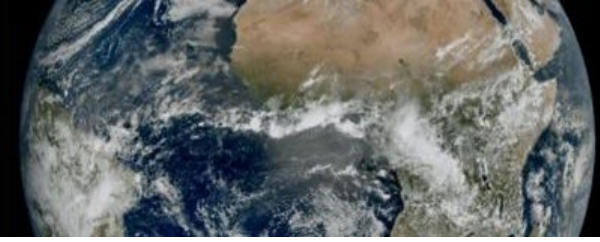
4

We accompany our partners as they **sustain** and manage the solutions over time.

Through our work, we **develop evidence** and **advocate** for local, regional and global change.



Addressing Challenges in Public-Private Partnerships



Challenge



Opportunity



Solution

Lack of regular, secure, and quality transport of medicines requires **sufficient and well-organized** transport assets and staff

Governments typically struggle to buy, operate and maintain transport assets resulting in infrequently delivered and stockouts but there is a **wide private sector available**

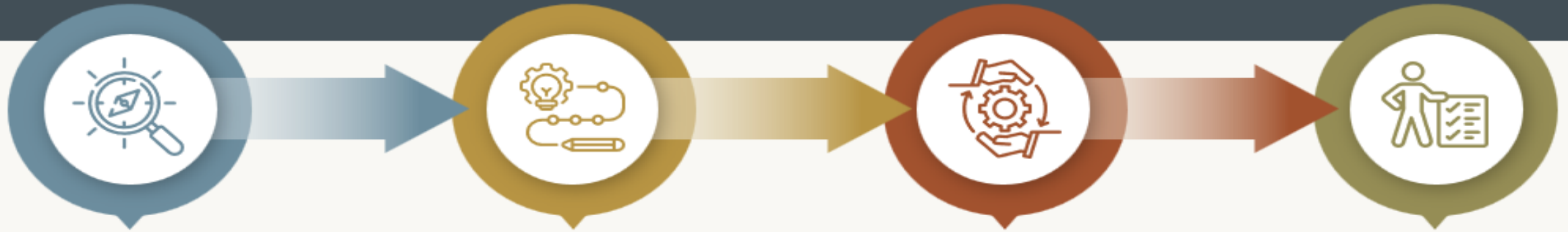
Using **private sector transport partners** to manage/execute transport can be the solution



OTRC

Provides four service packages to governments, implementing partners and the private sector to integrate land and drone-based outsourced transport

OUTSOURCED TRANSPORT
RESOURCE CENTER



EXPLORATION & SET-UP

- Develop strategy & cost model
- Develop & release request for proposal
- Align on roles and required skills
- Assess government capacity & develop skills development plan
- Develop implementation plan
- Conduct advocacy & fundraising

IMPLEMENTATION

- Prepare start-up implementation plan & toolkit
- Develop stakeholder management plan
- Develop roles, procedures & SOPs
- Coordinate regulatory applications for drone transport authorization
- Implement the infrastructure acquisition plan
- Develop & validate the service level agreement
- Implement monthly review of performance
- Implement quarterly expense review
- Develop the transition strategy & plan

MANAGEMENT

- Develop the transition strategy & plan*
- Develop stakeholder management plan*
- Develop staffing model
- Assess government capacity & develop skills development plan*
- Provide coaching & training based on skills development plan
- Develop annual budget with government
- Conduct advocacy & fundraising*

VERIFICATION

- Design verification approach, plan & budget
- Assess government capacity & develop skills development plan*
- Provide coaching & training based on skills development plan*
- Assess data quality & perform data analysis
- Develop verification report
- Conduct advocacy & fundraising*

Visit otrcsupport.org to learn more and contact us at otrc@villagereach.org

*This service is listed in more than one package and may not be required if already completed in another package of services.

Support the availability of high-quality medicines at the point of service by ensuring that:

1. MoH has consistent achievement of on-time, in-full, at quality deliveries with market competitive cost.
2. MoH has capability to measure, do verification, continuously improve the performance of the 4PL/3PL/drone airlines and can fully manage OT system without external dependence.
3. MoH has a structured and strategic collaboration with 4PL's /3PL's and drone airlines.
4. 4PL's /3PL's/drone airlines understand the needs and benefit of working with MoH's.



Where the OTRC is operating today.



Mozambique

Transfer the tools developed during outsourcing implementation and provide **capacity building to CMAM** for effective management of outsourced operations and support for **ISCISA curriculum development**.

Management



DRC

- Supporting CDRs in the implementation of **OT quality management** to ensure alignment with the National PSE strategy
- **Supporting EPI & DPS** in outsourcing of last mile to drone airlines

Management



Ethiopia

Supporting EPSS in **contracting a third-party logistics** provider (3PL) to manage the distribution of essential medicines from the central location to 16 hubs. and develop **EPSS Transport strategy**

Implementation & Management



Kenya & Zambia

The **outsourced perception survey and feedback dissemination** have been completed, resulting in an **approved concept note** by both countries. We are now in the process of initiating **donor conversations**.

Exploration & Set-Up



PLST Project to 15 Countries

conducted in-depth specimen transport system assessments in all 15 countries, as well as co-created tailored implementation plans with each Ministry of Health.

Angola, Cameroon, Chad, DRC, Ethiopia, Guinea, Kenya, Malawi, Mozambique, Niger, Nigeria, South Sudan, Tanzania, Uganda, and Zambia

Management

NOTE: The OTRC offers technical assistance by working alongside local technical partners. VillageReach doesn't need to have a permanent presence in the country to implement our services. Instead, through collaborative partnerships, we utilize existing in-country resources to support public health supply chains.

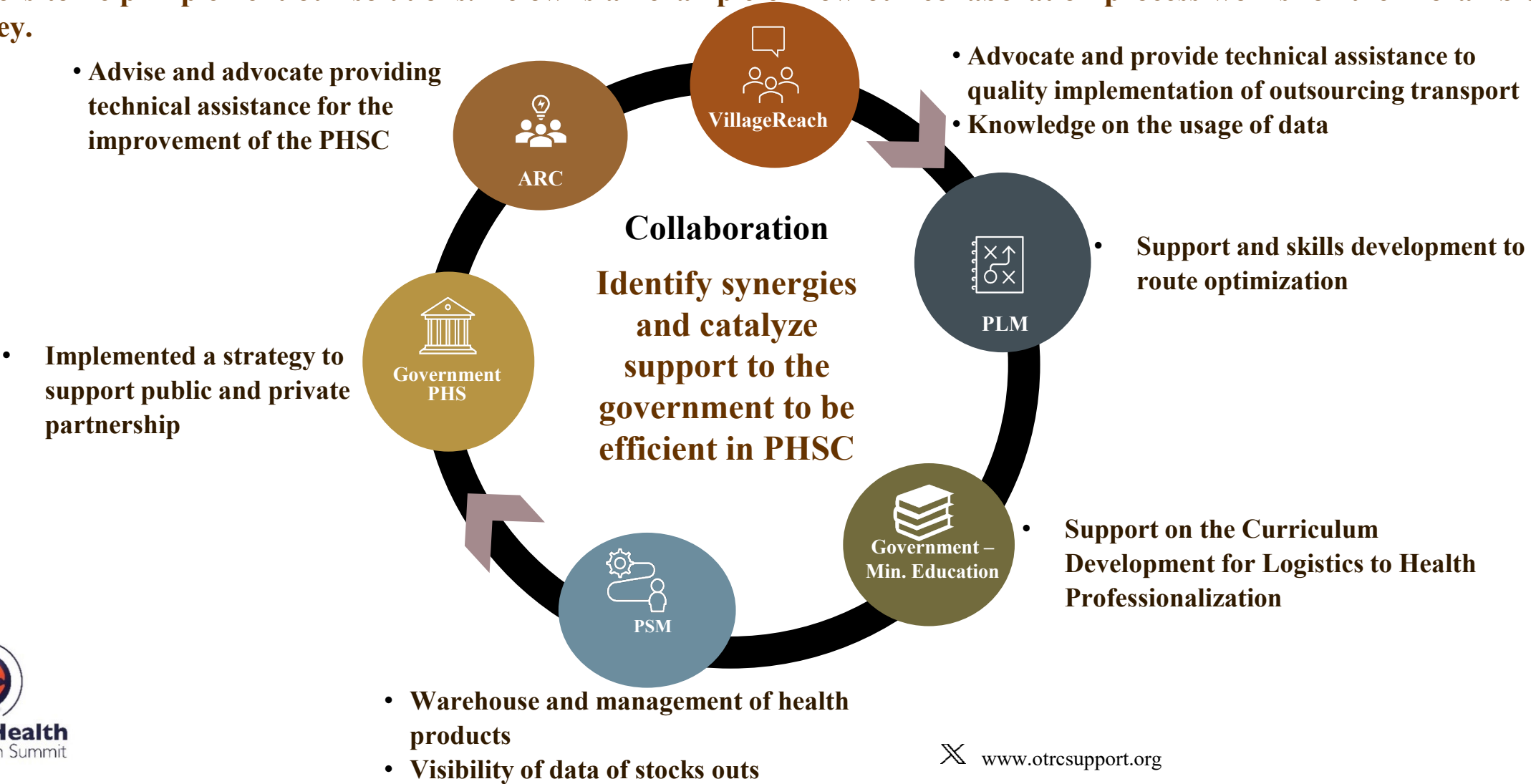
SERVICES

1. Exploration & Set-Up
2. Implementation
3. Management
4. Verification

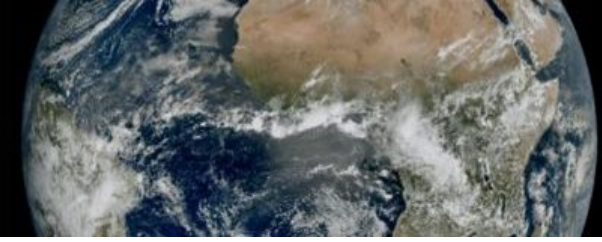


OTRC Collaboration.

Sustainable outsourcing needs teamwork. At VillageReach, we believe in working together, which is why we find strategic partners to help implement our solutions. Below is an example of how our collaboration process works for the Mozambique OT journey.



Evidence of Outsourced Transport Logistics Impact



OTRC Drone Transportation key results

- Eliminated stockouts (DRC).
- Drastically reduced transport times (DRC, Malawi, Mozambique).
- Improved vaccine availability (DRC).



OTRC Polio Lab Sample Transportation key results

- Faster transit times (Guinea, Malawi, Mozambique).
- 100% sample integrity in Guinea.



OTRC Last Mile Supply Chain Program key results in Mozambique

- 99% on-time delivery
- 99.5% complete delivery
- 78% delivered within 25-35 days



Drones & Traditional Transport System

Traditional Transport System



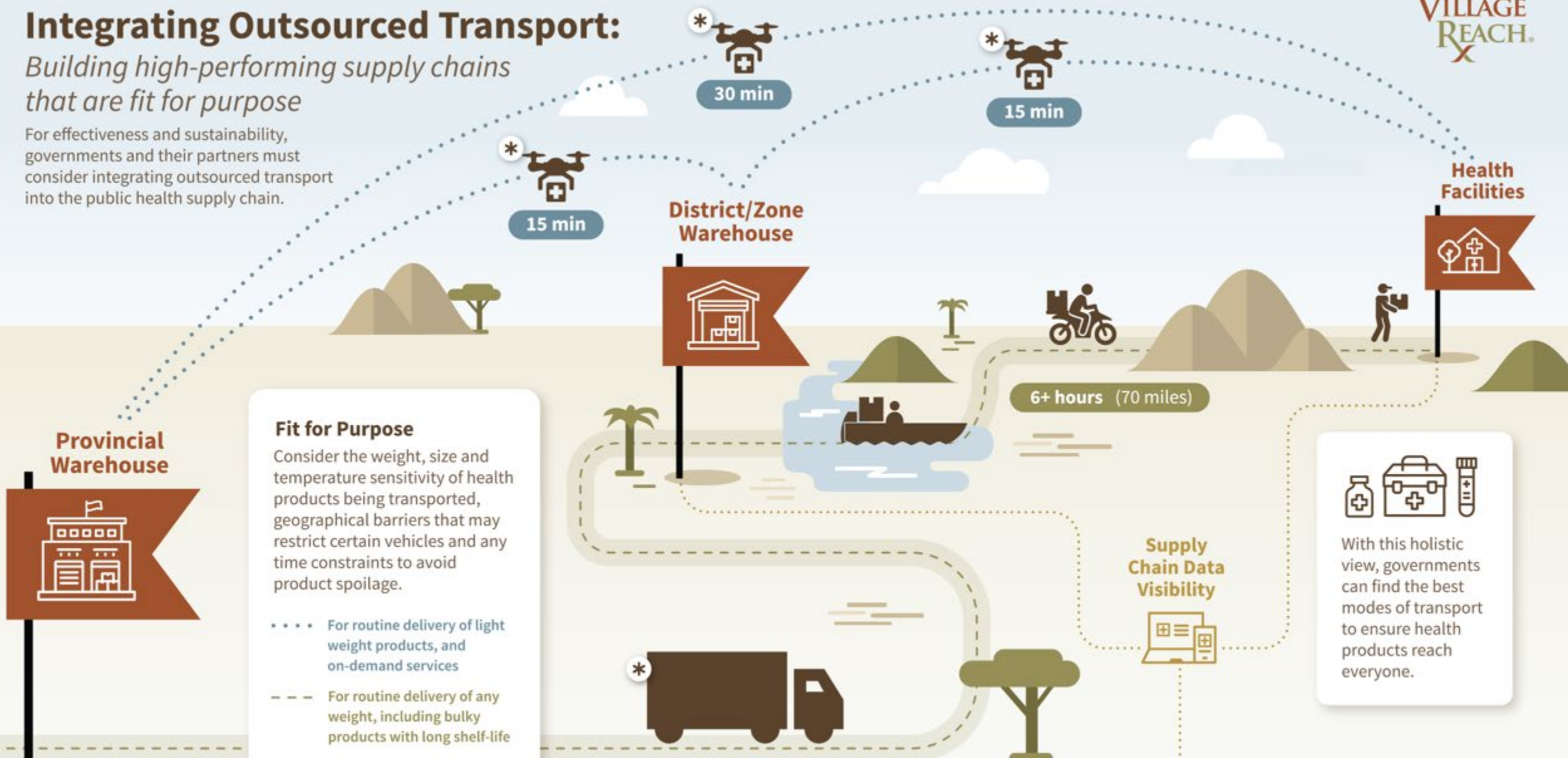
Leveraging Outsourcing for Expanded Reach-Future Vision for Health Supply Chains"



Integrating Outsourced Transport:

Building high-performing supply chains that are fit for purpose

For effectiveness and sustainability, governments and their partners must consider integrating outsourced transport into the public health supply chain.



For more information contact:



For more information on the OTRC approach, please contact
Angelina Cumba— Outsourced Logistics Expert & Team Lead of OTRC
angelina.cumba@villagereach.org
Tel: +258 850570762



For more information on the OTRC approach, please contact
Dr. Olivier Defawe— Director, Private Sector Engagement
olivier.defawe@villagereach.org
Tel: +1 206 437 8611



For more information on the OTRC approach and the OTRC toolkit
Esselina Brito— Outsourced Transport Advisor of OTRC
esselina.brito@villagereach.org
Tel: +258 864708872



Pour plus d'information sur l'OTRC en français:
Cedric Ekembe— Outsourced Transport Advisor of OTRC
cedric.ekembe@villagereach.org
Tel: +243 813260616



THANK YOU



Thank you to our 2024 Sponsors!



PLATINUM



Chemonics
Development works here.



Logenix
International



GOLD



KAIZEN™
INSTITUTE

sanofi



**World Health
Organization**

SILVER

VILLAGE REACH®
X

BRONZE



Technology & Operations
UNIVERSITY OF MICHIGAN

CONTRIBUTORS

BIXAL



PANAGORAGROUP



**Libra
Circle
LTD**