



USAID
FROM THE AMERICAN PEOPLE

DLI-4: Pakistan Logistics Management Information System (LMIS)

www.lmis.gov.pk

2014 – 2018

A journey to self reliance

Sardar Iftikhar Khan

Director MIS, November, 2018

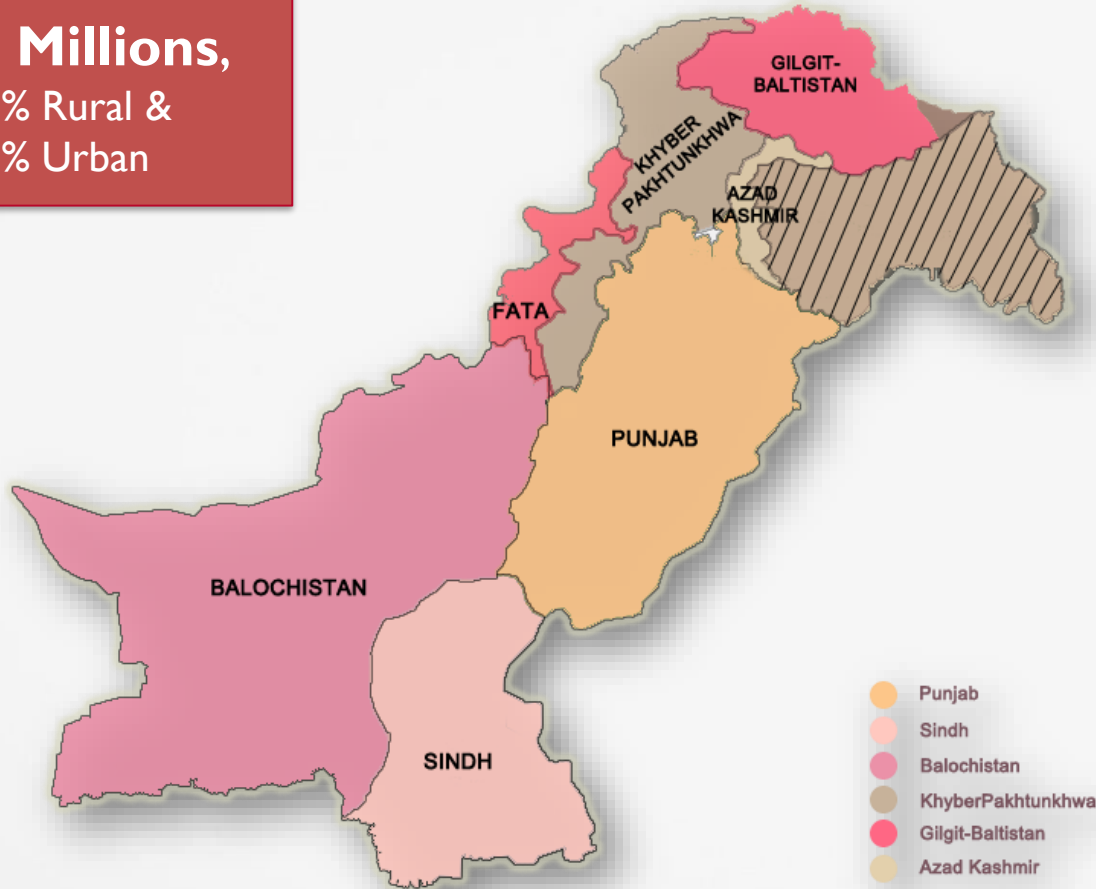
USAID GLOBAL HEALTH SUPPLY CHAIN PROGRAM

Procurement and Supply Management

The Scale



Population:
208 Millions,
 63.62% Rural &
 36.38% Urban



Province	Population	Comparable Countries (population-wise ¹)
Punjab	110 M	Philippines: 104.9 M Ethiopia: 104.9 M
KP	30.5 M	Saudi Arabia: 32.9 M Afghanistan: 35.5 M Morocco: 35.7 M
Sindh	47.8 M	Tanzania: 55.2 M Myanmar: 53.3 M South Africa: 56 M
Balochistan	12.3 M	Cambodia: 16.0 M Senegal: 15.8 M Zimbabwe: 16.5 M

Pakistan's population is six times Afghanistan's

Challenge:

Improve the availability of health supplies at the last mile and visibility of information throughout the supply chain

We are still struggling...

Only **66%** fully immunized children aged 12-23 months (PDHS 2017-18) / **88%** (PSLM 2014-15)

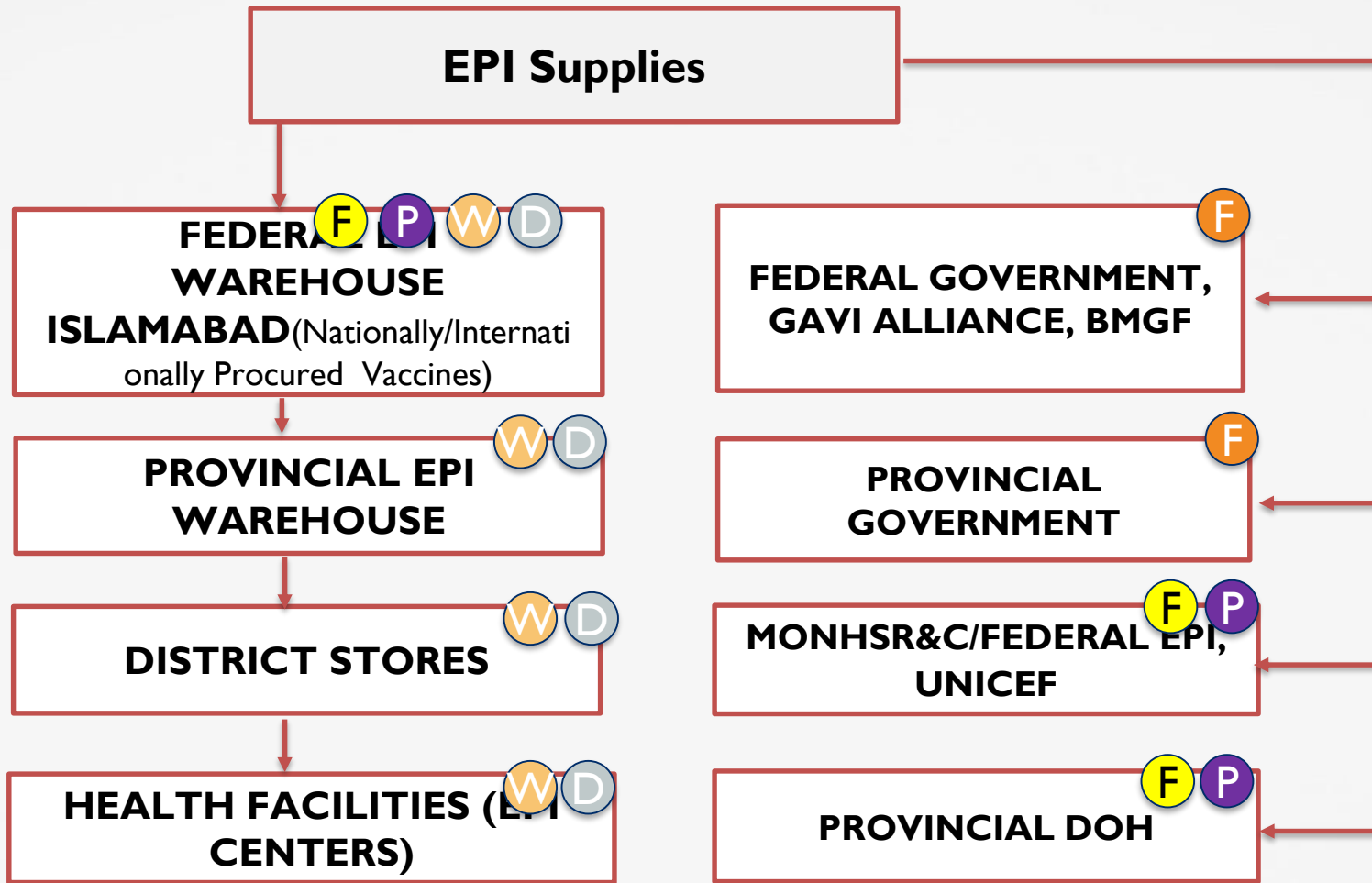
~30% of children are chronically malnourished and lack safe water and household sanitation, especially in rural areas

Infant mortality rate is one of the highest i.e. **62 per 1,000 live birth**

One in Ten children do not survive their fifth birthday with the majority of deaths due to diarrhea, pneumonia or vaccine-preventable diseases.

Only **63%** of children **age 12-23** months have a vaccination card.

Complex supply chain, diverse needs



Keys



Funding



Forecasting & Supply Planning



Procurement



Warehousing



Distribution

Partnerships and Leveraging of Resources

2014

2015

2016

2017

2018

2019 onwards

54 Districts ~ 2950

83 Districts ~ 3970

96 Districts ~ 7160

158 Districts ~ 8528



Release-I

**Bare Bone PHP
(LAMP Stack)**

1. IM
2. CR
3. Private Hosting

Release-II

Zend + Doctrine

1. CCEM
2. CM
3. MOH Adhoc
Hosting

Release III

1. Analytics
2. Data Tools
3. NTC NOC

Release IV

1. Alerts – Real Time Visibility
2. VPD/AEFI
3. Data Interfaces
4. BI Layer

Future

1. TMDs
2. Push to Pull
3. Campaign Module
4. Bundled Apps
5. Mature REST APIs



Transactions Since 2011

6.48M



Avg Monthly Usage

8521



DB Size

9.53 GB

Increase of 430 Mb /
monthly



Pre-emptive Alerts

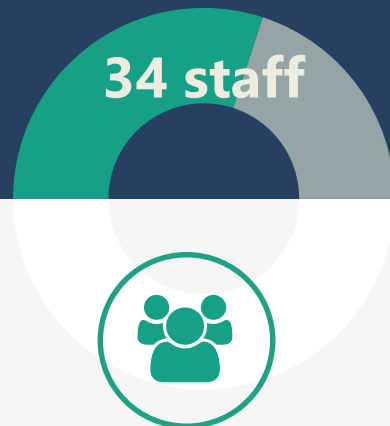
11,197

The Scope

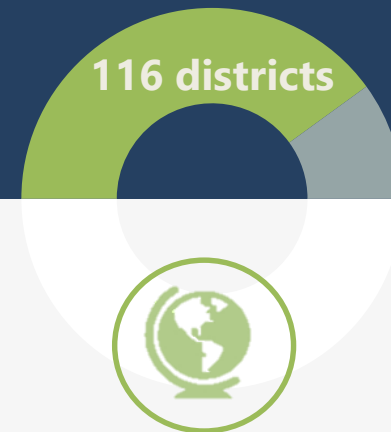
Thanks to the Federal/Provincial EPI and the WHO/Gavi Alliance
Contract: 1st Dec 2017 to 31 Jan 2018



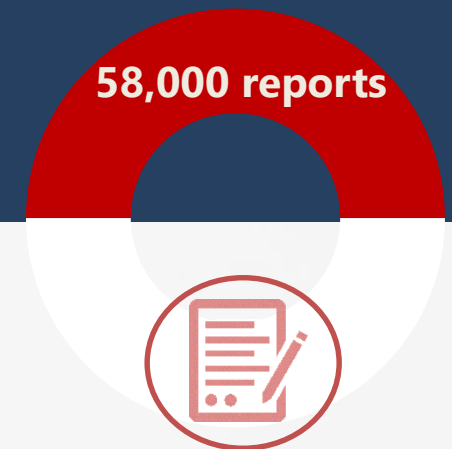
Timeframe



Scale up HR

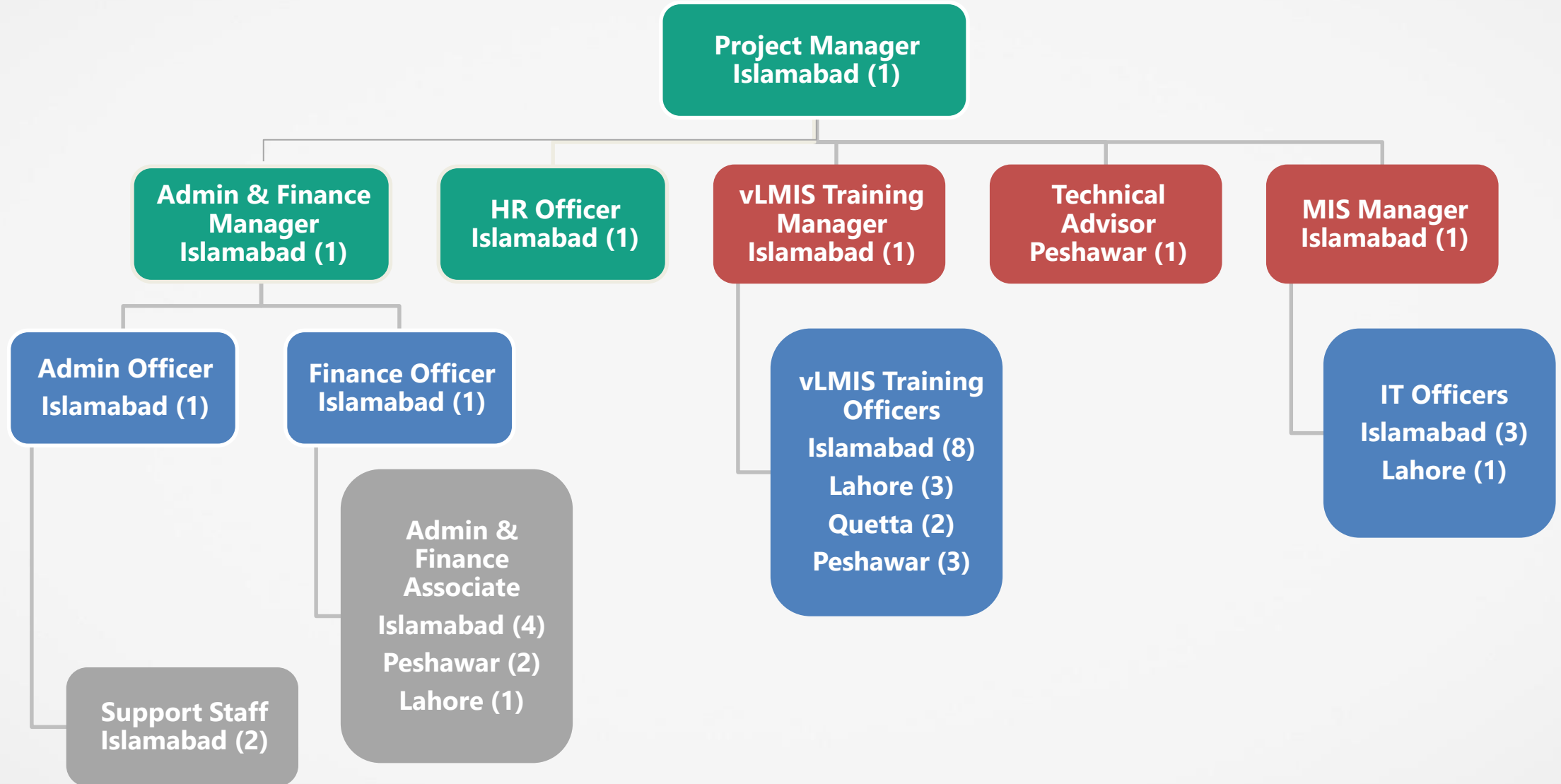


**Geographical
coverage**



**Data Collection &
Uploading (ETL)**

Assembled a new team on War Footings



Two Phased Scale up

Phase – I
Dec 31,
2018



Completion of Provincial (44)
and District level (356) staff
Training

Phase – II
Jan 31, 2018



Completion of Hands on
Training (1536)



Entry of Historical vLMIS
Data

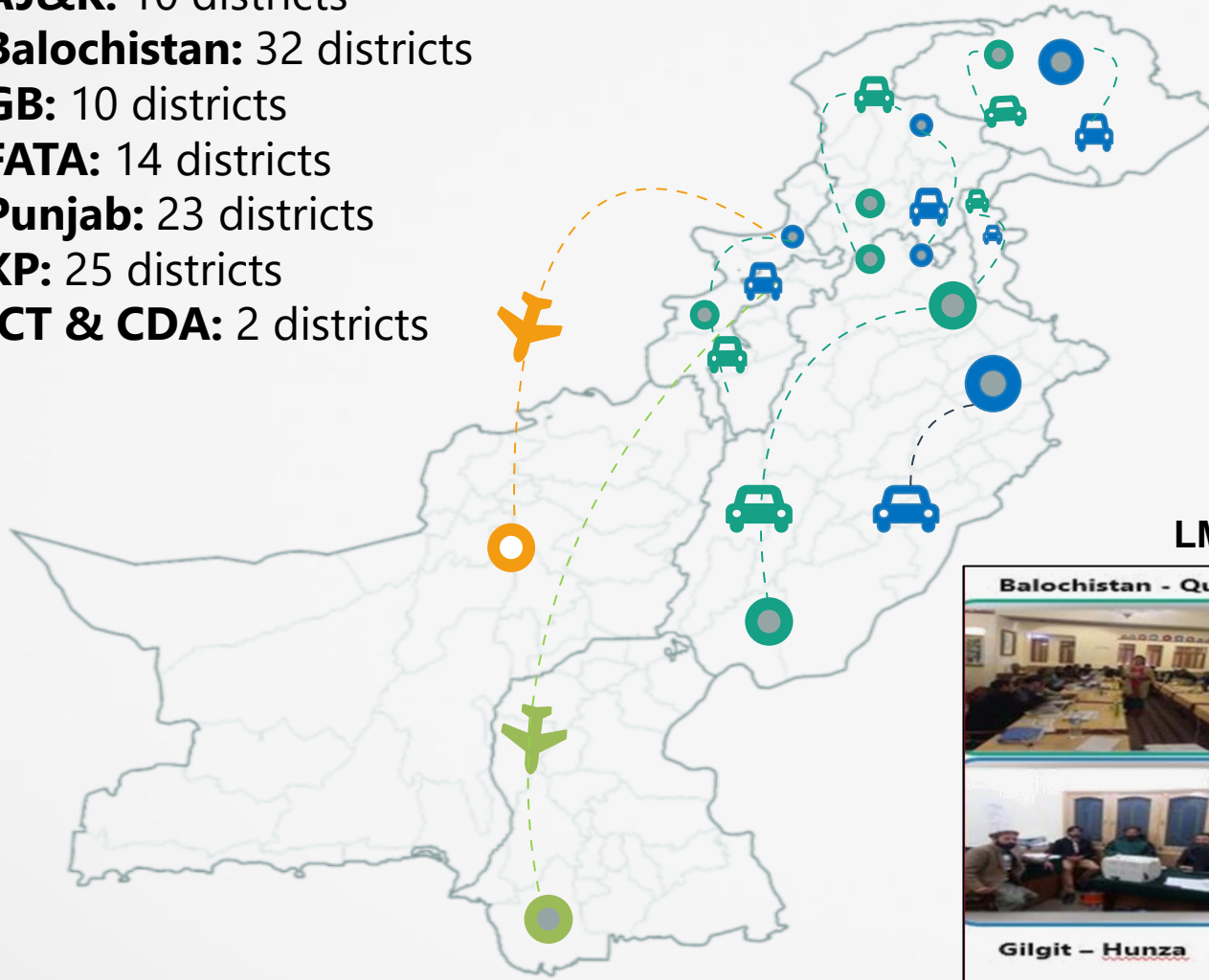


Fully Functional vLMIS

Quite an Undertaking in a span of two months

Team Mobility – Approx. 30,000 Km in 32 active days

- AJ&K:** 10 districts
- Balochistan:** 32 districts
- GB:** 10 districts
- FATA:** 14 districts
- Punjab:** 23 districts
- KP:** 25 districts
- ICT & CDA:** 2 districts



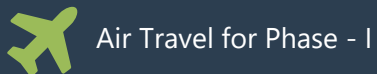
“Indeed nationwide scale-up is an important step in standardization of DLI-4 and improved visibility of EPI supply chain”

Dr. Syed Saqlain Gilani, National Program Manager, Federal EPI, Islamabad

LMIS Scale-up – Phase I Trainings



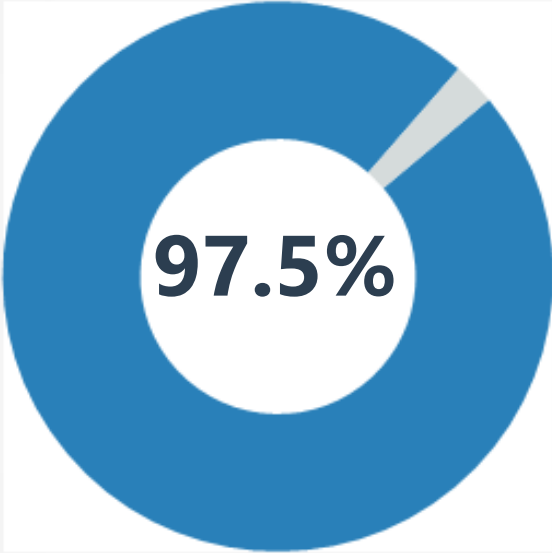
LMIS Scale-up – Phase II Hands on Trainings



Impact of Training – GoP Staff Capacity Built on Standardized Vaccine Reporting

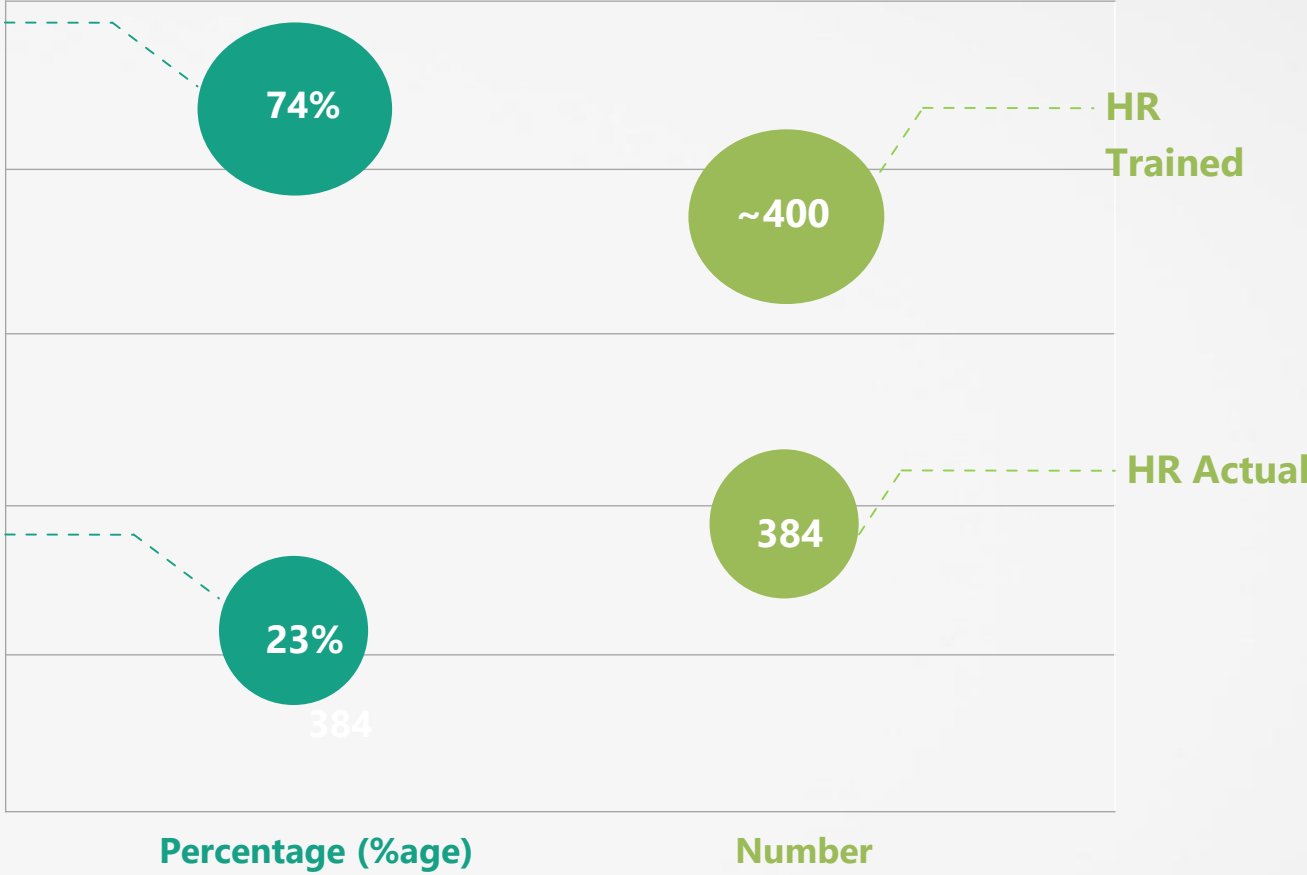


Feedback by Participants
(Excellent/Good)



Post test (%age)

Pre test (%age)

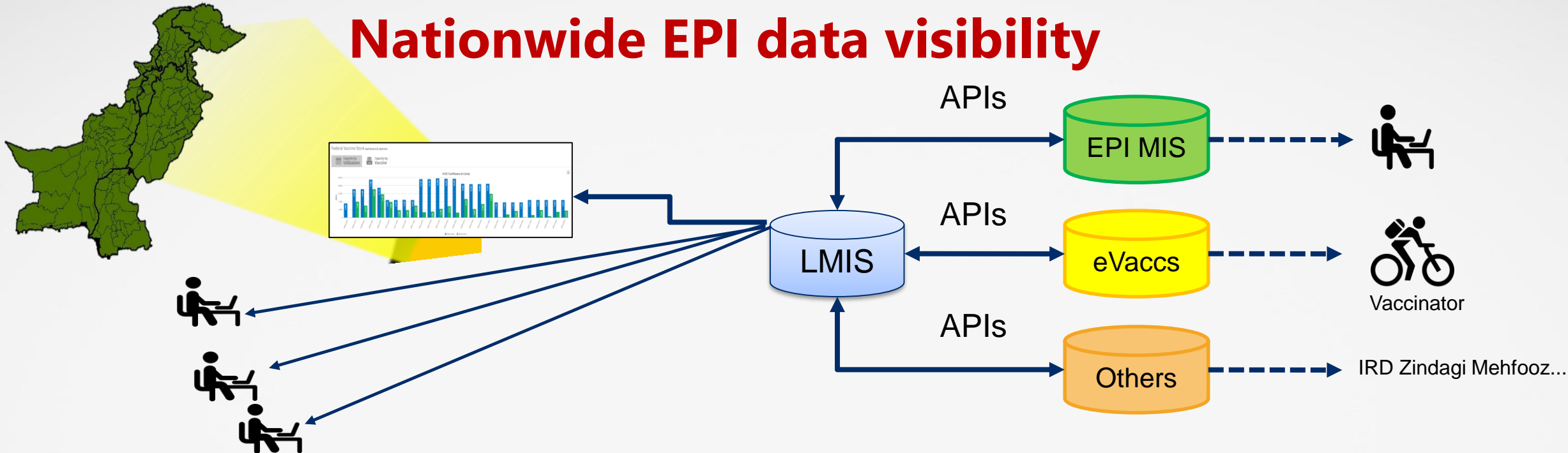


HR Number (Actual/Trained)



Pre-Post Analysis Impact

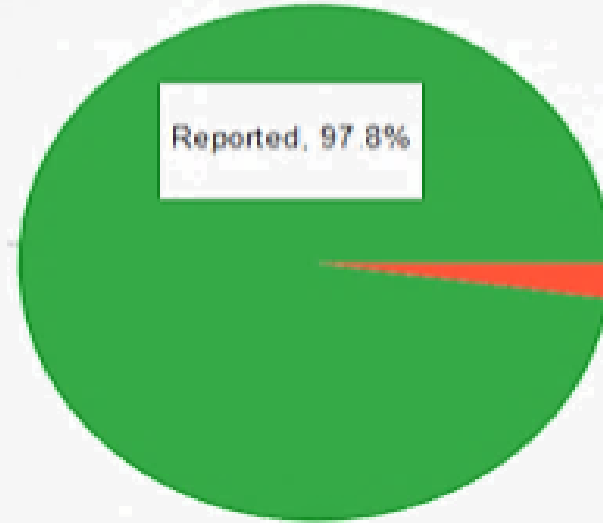
Nationwide EPI data visibility



Province	Total Population	Target Live Births @ 3.5% of Total Population	Target Surviving Infants @ 92.30% of Live Births	BCG		OPV-I		OPV-II		OPV-III		Pentavalent-I		Pentavalent-II		Pentavalent-III		Measles-I		Measles-II			
				VACC	%	VACC	%	VACC	%	VACC	%	VACC	%	VACC	%	VACC	%	VACC	%	VACC	%	VACC	%
				Punjab	105,484,457	307,663	284,896	295,541	96	247,029	80	229,289	75	225,366	73	245,302	80	227,977	74	225,670	73	242,499	79
Sindh	45,009,345	131,277	121,563	127,158	97	104,044	79	86,160	66	82,323	63	103,960	79	86,021	66	82,651	63	95,734	73	8,567	7		
Balochistan	9,517,395	27,759	25,705	1,759	6	1,720	6	1,631	6	1,151	4	1,725	6	1,645	6	1,169	4	1,182	4	281	1		
AJK	4,163,860	12,145	11,246	3,802	31	3,542	29	3,415	28	3,217	26	3,530	29	3,425	28	3,223	27	2,969	24	732	6		
FATA	4,362,139	12,723	11,781	10,433	82	9,943	78	9,365	74	7,940	62	9,559	75	8,982	71	7,587	60	7,181	56	1,569	12		
Gilgit Baltistan	1,784,511	5,205	4,820	714	14	721	14	684	13	638	12	723	14	684	13	644	12	559	11	110	2		
Islamabad	1,586,232	4,627	4,285	1,399	30	1,413	31	1,249	27	1,143	25	1,413	31	1,231	27	1,133	24	1,144	25	415	9		
Pakistan	171,907,939	501,399	464,296	440,806	88	368,412	73	331,793	66	321,778	64	366,212	73	329,965	66	322,077	64	351,268	70	43,277	9		

Reporting Compliance

Reporting Status



Reported Union Council List

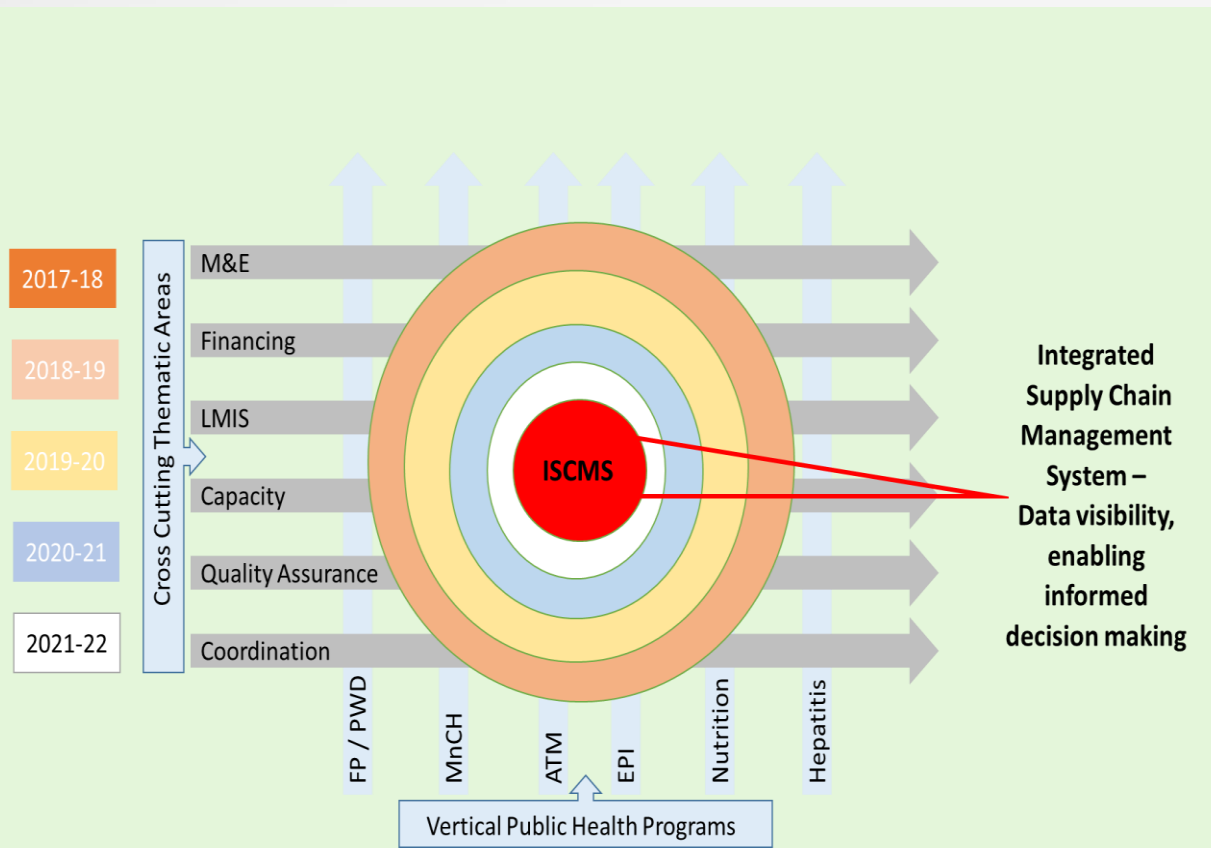
S.No	Union Council Name	S.No	Union Council Name
1	Badin-I	2	Badin-II
3	Badin-III	4	Kadi Qazia
5	Kadhan	6	Mithi
7	Abdullah Shah	8	Luwari Sharif
9	Nindo	10	M K Bhurgri
11	Seerani	12	Matli-1
13	Malhan	14	Phalkara
15	Thari	16	Haji Sawan
17	Tando Ghulam Ali	18	Manik Leghar
19	Holipota	20	GH: Shah Lag
21	Dumbalo	22	Bhudho Qam
23	Tando Bago	24	Pahar Mari
25	Khalifo Qasim	26	Dei Jurkas
27	Pangrio	28	Khoski
29	Khadbro	30	Dadah

Reporting reliability

Operator's Data Reporting Status For Bahawalpur (01/2018)

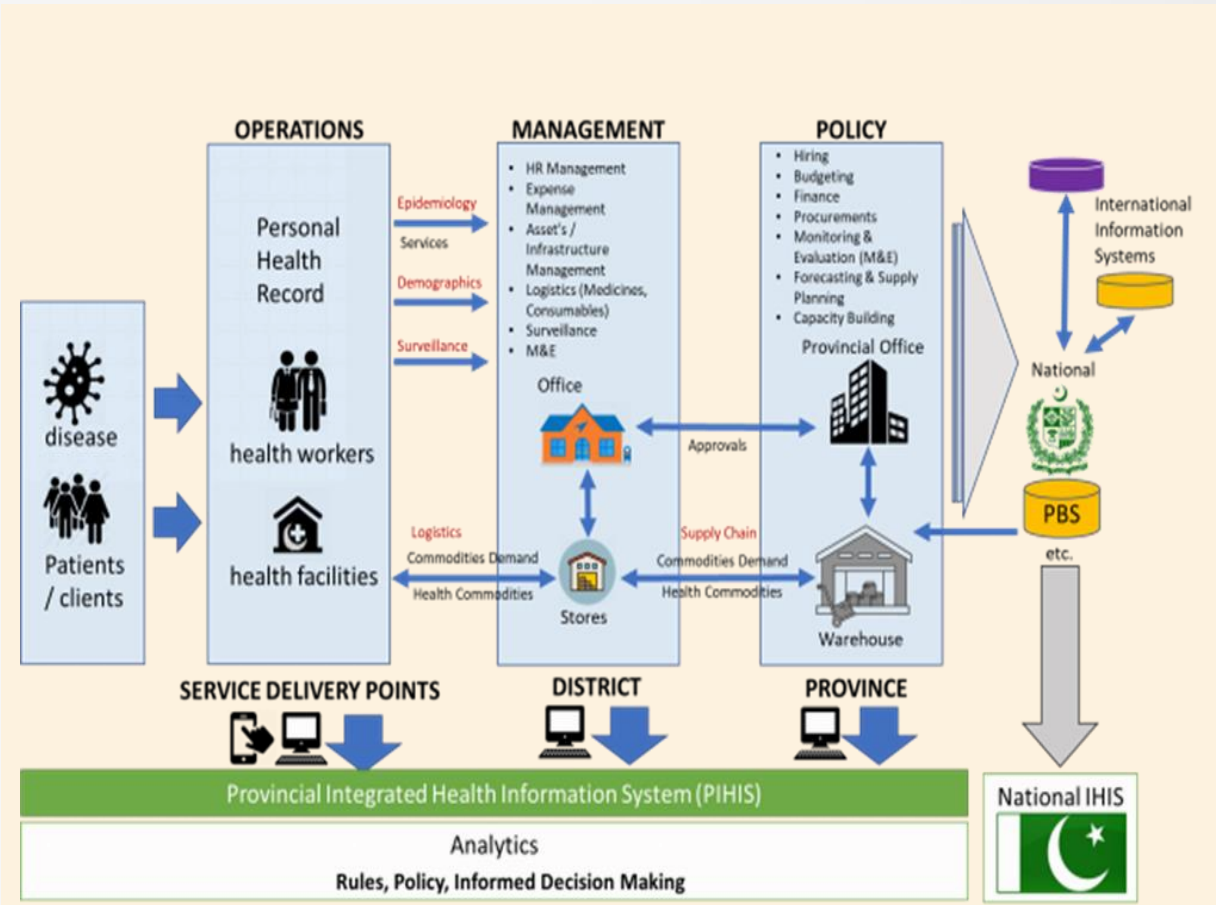
S.No.	Operator	Address	Phone	Reported UCs	Reporting %
1	Faraqat Ali	THQ Hospital Hasilpur	92304768759	<u>58/Fateh</u> , <u>79/F</u> , <u>89/F</u> , <u>Hasilpur Old 2nd</u> , <u>UC Hasilpur Old (H-37)</u> , <u>H-38 Urban</u> , <u>H-39 Urban</u> , <u>Pella</u>	8 of 8 = 100%
2	Irshad Ahmed	RHC Choonawala	92300976338	<u>188/M</u> , <u>163/M</u> , <u>192/M</u>	3 of 3 = 100%
3	Muhammad Ayoub	RHC Qaimpur	92306653715	<u>Qaimpur</u> , <u>Jamalpur</u> , <u>Shahpur</u>	3 of 3 = 100%

Future Outlook



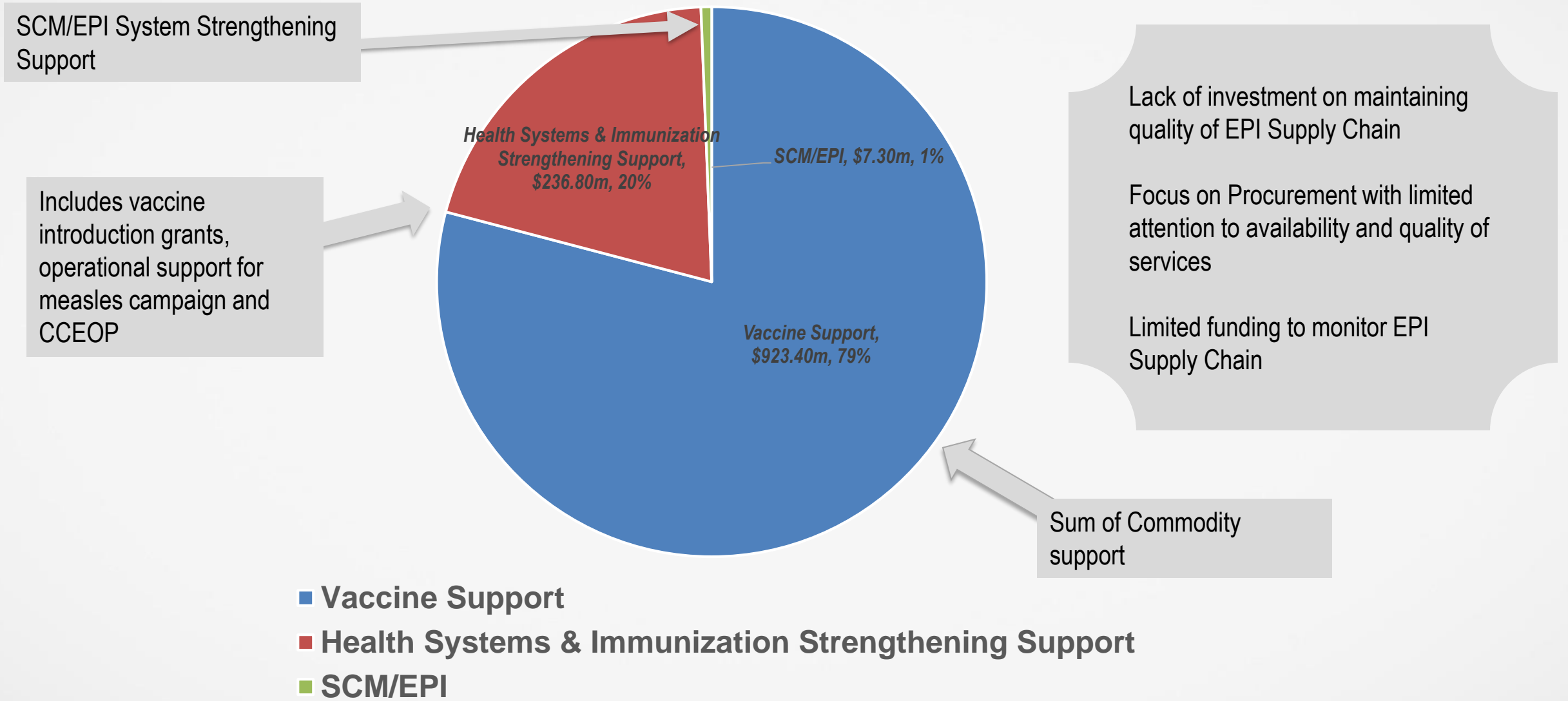
Integrated Supply Chain Management System – Data visibility, enabling informed decision making

Institutional SC Capacity Framework



Interface, Integrate, Consolidate

Limited Supply Chain Investment within the Overall Financing Ecology



Thank you!

For more information, please visit

www.lmis.gov.pk