





## Thanks to our generous sponsors



10th Global Health Supply Chain Summit, Accra (Ghana); Nov 15-17,



# OpenLMIS Vaccine Module

Tenly Snow

OpenLMIS Community Manager

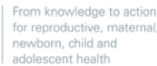




# What is OpenLMIS?

OpenLMIS is an open source, cloud-based, enterprise class electronic logistics management information system (LMIS).

*The OpenLMIS initiative incorporates a community-focused approach to develop open source and customizable LMIS systems:*





# Version 3 Series

Version 3 is **not** just a repackaged version 2

- Version 3 is based on a new modular, microservices architecture
- Underlying architecture bundles separate, standalone, deployable 'services' representing a logical set of related features to support different workflows (ie. Requisitions, Physical Inventory, etc.)
- Microservices provide a more flexible and extensible approach through the development of modules for custom, country-specific features

## OpenLMIS 3.0.0

Reference Data Service

Fulfillment

Requisition

Authentication

Notifications

"Pull" Specific Features

"Push" Specific Features

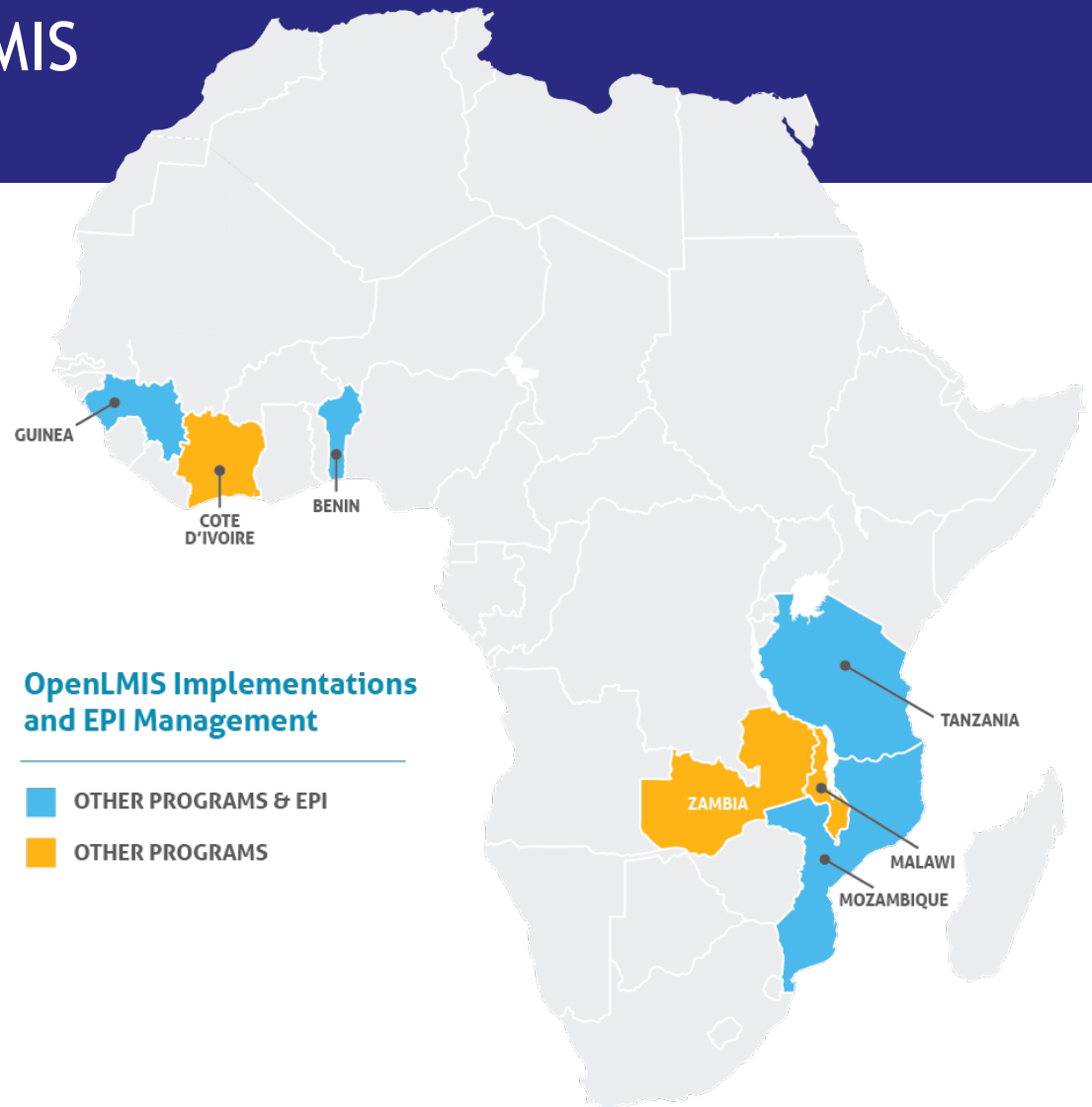


# Where does OpenLMIS Manage Vaccines?

OpenLMIS manages logistics data for over 10,000 health facilities across **7** geographies

OpenLMIS manages EPI data in **4** geographies across Africa

In Mozambique, OpenLMIS manages EPI data for **830** service delivery points, reaching over **13.8** million people





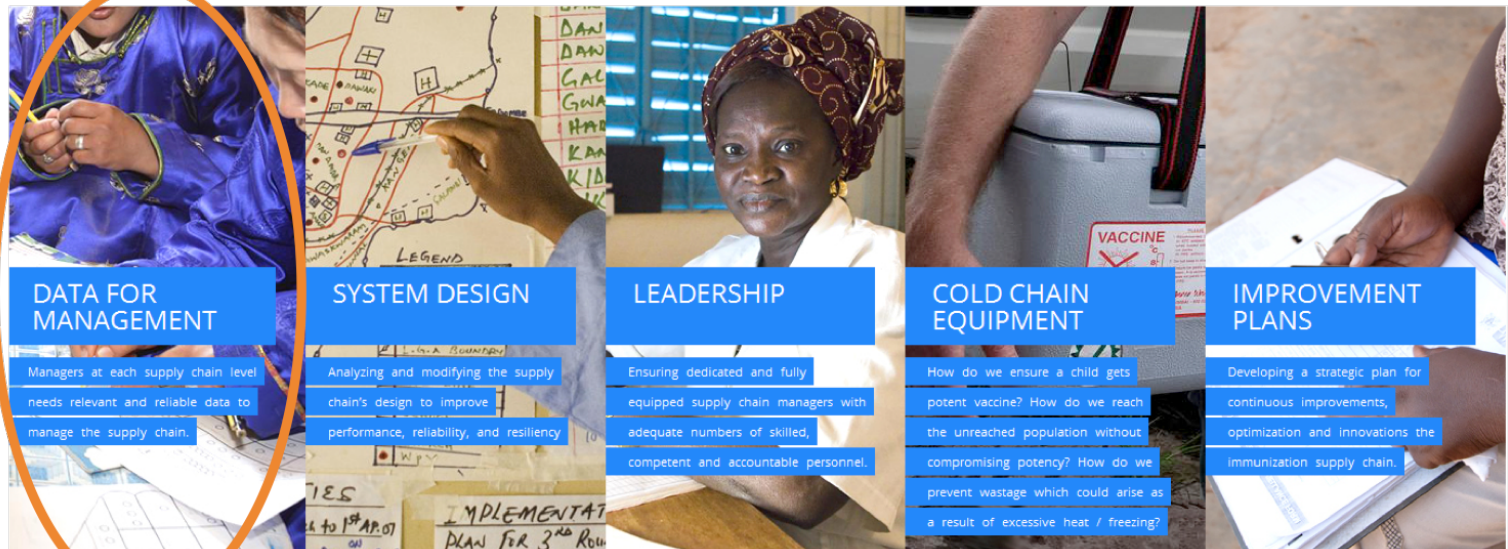
# Vaccine Module

Why is OpenLMIS building vaccine functionality?

No digitized data, no management



Without a reliable electronic system to capture, aggregate, and disseminate data, EPI programs struggle to manage evolving, expanding systems





# Vaccine Module Development

## User Stories draw from:

- SELV (Mozambique)
- VIMS (Tanzania)
- SIGL (Benin)
- VLMIS (Pakistan)
- HCMIS (Ethiopia)
- DVDMT
- SMT
- Stakeholder interviews/gap analysis

## Interoperability considerations:

- DHIS2
- RTM platforms (ex. Nexleaf's ColdTrace)
- Electronic Medical Records and/or Immunization Medical Records (OpenSRP)
- Master Facility Registry
- Reporting tools (Ona, Tableau)
- ERP





# Features and Functionality

Vaccine Module Key Features		Reporting	
Domain	CCE Reporting & Management	<ul style="list-style-type: none"> <li>❖ Manage CCE inventory</li> <li>❖ Capture CCE functional and temperature status</li> <li>❖ Generate temperature alarms &amp; notifications</li> </ul>	<ul style="list-style-type: none"> <li>❖ Functional status of CCE</li> <li>❖ Temperature alarms</li> <li>❖ Available CCE storage capacity</li> </ul>
	Forecasting & Estimation	<ul style="list-style-type: none"> <li>❖ Calculate vaccine needs using multiple variables (MOH targets, historical supply, etc.)</li> <li>❖ Display estimates by facility/delivery area/product</li> </ul>	<ul style="list-style-type: none"> <li>❖ Forecast accuracy/forecast demand ratio</li> <li>❖ Comparison of estimates using different inputs</li> </ul>
	Distribution / Resupply	<ul style="list-style-type: none"> <li>❖ Support pull, push, and mixed supply chains</li> <li>❖ Support local fulfillment and integrated supply chains</li> </ul>	<ul style="list-style-type: none"> <li>❖ On-time and in-full orders or deliveries</li> <li>❖ Delivery/resupply status reports by facility/geographic area/time period</li> </ul>
	Stock Management	<ul style="list-style-type: none"> <li>❖ Enter vaccine stock data and capture stock movements</li> <li>❖ Capture vial wastage</li> </ul>	<ul style="list-style-type: none"> <li>❖ Full stock availability</li> <li>❖ Stocked according to plan</li> <li>❖ Closed vial wastage reports</li> </ul>



# User Input & Best Practices

OpenLMIS is committed to best practices in software design and open source development by

- Utilizing user input for responsive software design
- Coordinating with partners to define and adhere to globally utilized standards
- Maintaining an open source community of partners and experts



# User-Centered Design

Focused on defining the workflows & data elements associated with resupplying vaccines

**12 attendees from EPI programs in 5 countries**

Bénin, Côte d'Ivoire, DRC, Guinea, Senegal

Workshop outcomes directly influence the design and development of the OpenLMIS vaccine module





# Standards and Merging Communities



- Provides donors (ex. USAID) visibility into the supply chain
- Goal: End to end (E2E) visibility
- OpenLMIS adheres to Global Standard One (GS1) standards and the United Nations Standard Products and Services Code (UNSPSC) for classification of products



- OpenLMIS and OpenHIE coordinate to define and promote standards within the health information ecosystem
- Open architecture, community, and process
- Standards like FHIR (Fast Healthcare Interoperability Resources)



# The Community

- OpenLMIS is building the vaccine module by listening to users and applying best practices
- The Community continually reviews the product roadmap, feature requests, and new feature development in order to build the best product
- OpenLMIS Product Committee meets 2x per month to discuss and review software development

## Community

### Welcome to the OpenLMIS Community!

OpenLMIS is an open source, enterprise-class electronic LMIS tool supported by an international community of donors, partners, implementers, and developers. This community is dedicated to providing continuous support to the countries and health programs that implement OpenLMIS, with a strong, ongoing focus on improving data visibility within health supply chains globally.

### What is the Community?

The OpenLMIS Community is an open source community that supports the initiative through volunteered time and resources. The Community is made up of a global core team, a Community Manager, and health, technology, development, and financial-support partners. These partners provide technical expertise, financial contribution, leadership, decision-making, and innovation to the initiative. See our [Collaborators](#) page for a full list of community partners.

### Why Community?

The OpenLMIS Community is a unique group of highly skilled partners working toward a shared goal of supporting and extending the reach of OpenLMIS globally.

The Community provides ongoing direction to product development and support to existing implementations, ensuring that the software is up-to-date and meets the most-requested needs of users in the field.

#### LATEST NEWS

We Build by Listening - OpenLMIS at TechNet

RFI - Logistics & Health Management Information Systems Solutions in El Salvador

So Long, and Thanks for all the Fish! 🐟

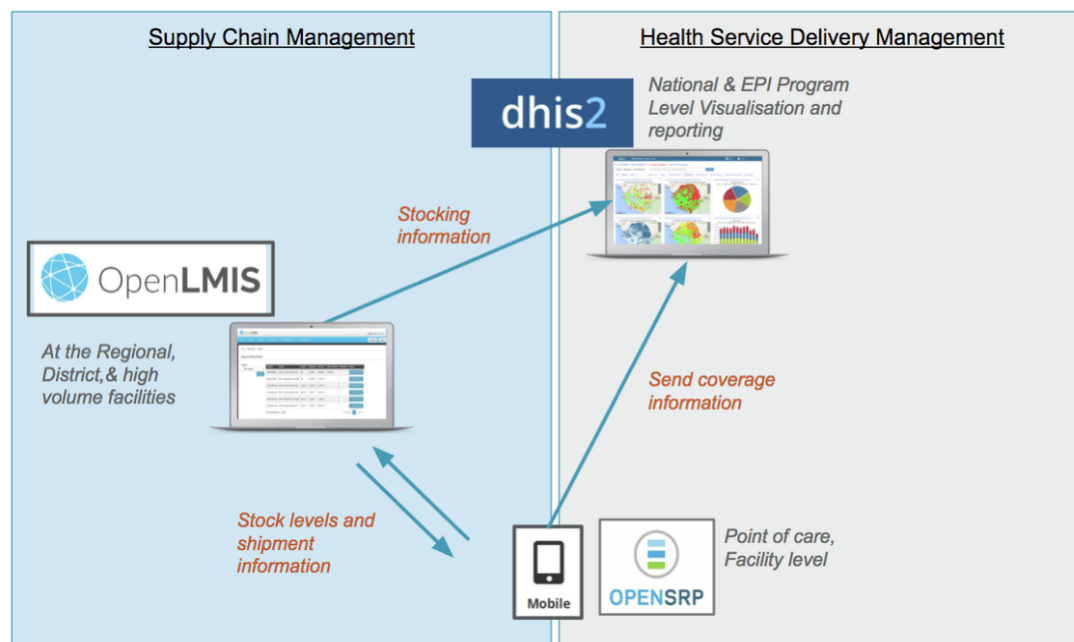
[MORE >](#)





# Global Digital Health Forum

## Integration lab



## Joint panel with JSI HMIS/LMIS Integration in Tanzania



GLOBAL HEALTH SUPPLY CHAIN –  
TECHNICAL ASSISTANCE - TANZANIA







Thanks to our generous sponsors



10th Global Health Supply Chain Summit, Accra (Ghana); Nov 15-17,