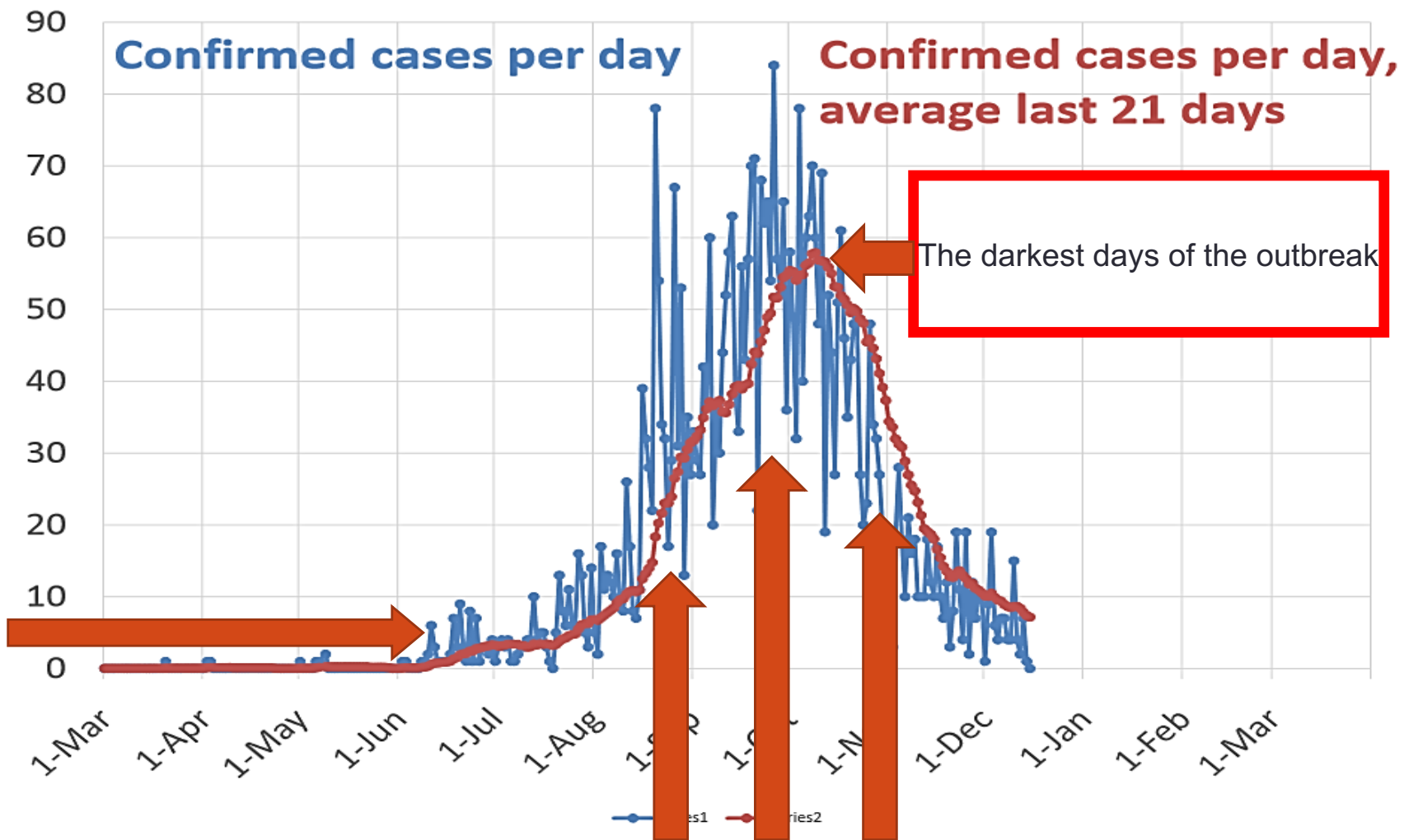




10th Global Health Supply Chain Summit

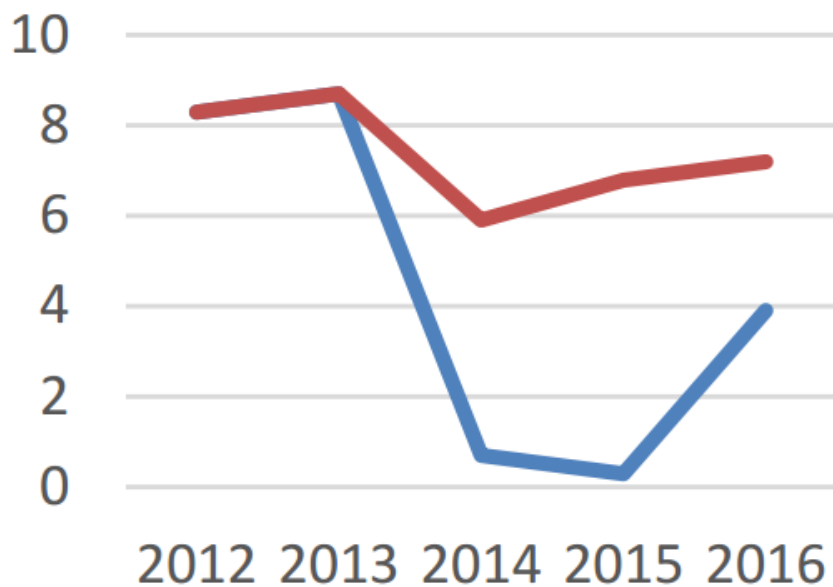
Tolbert Nyenswah, LLB, MPH
*Former Deputy Minister of Health/
Director General, NPHIL*

Hotel Kempinski, Accra, Ghana
15-17 November 2017



A weak Public Health System created An EVD Crises that destroyed the Economy

Liberia Impact of Ebola on GDP(%)

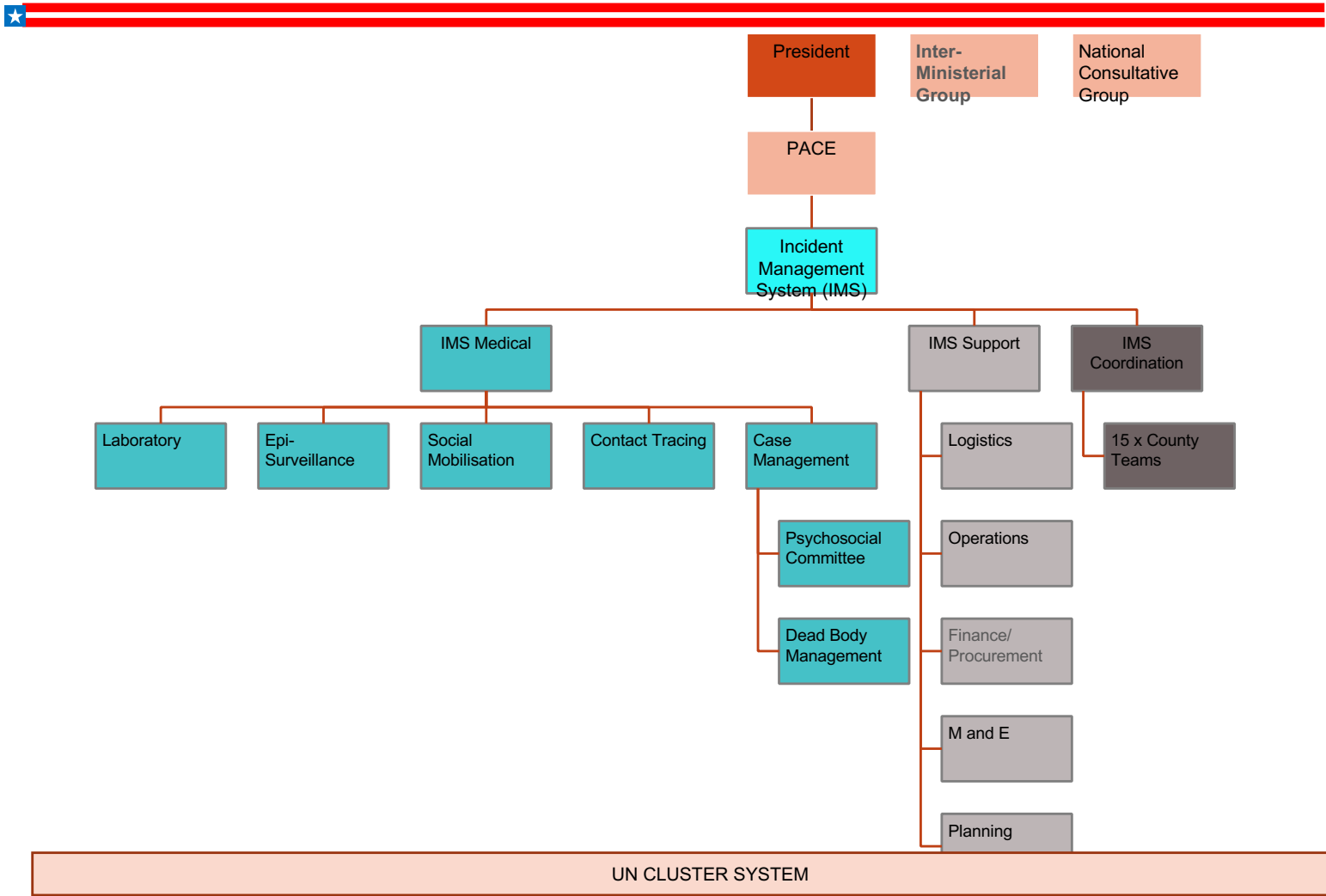


— Liberia

— Liberia pre-Ebola

The economic and fiscal impact has outlasted the epidemiological impact due to severe shocks to investment, production, and consumption throughout the region, coupled with commodity price shocks.

Leadership, Coordination, Control and Command



THE STRATEGIC AGENDA

ASSURED UNIVERSAL COVERAGE

With health & related services, even when there are health threats

ACCESS TO SAFE &
QUALITY HEALTH
SERVICES

EMERGENCY RISK
MANAGEMENT

APPROPRIATE ENABLING
ENVIRONMENT

RESILIENT HEALTH SYSTEM

Demand driven
productive Health
workforce

Re-engineered
health infrastructure

Epidemic
preparedness and
response

Medicines
management
capacity

Restored quality
service delivery
systems

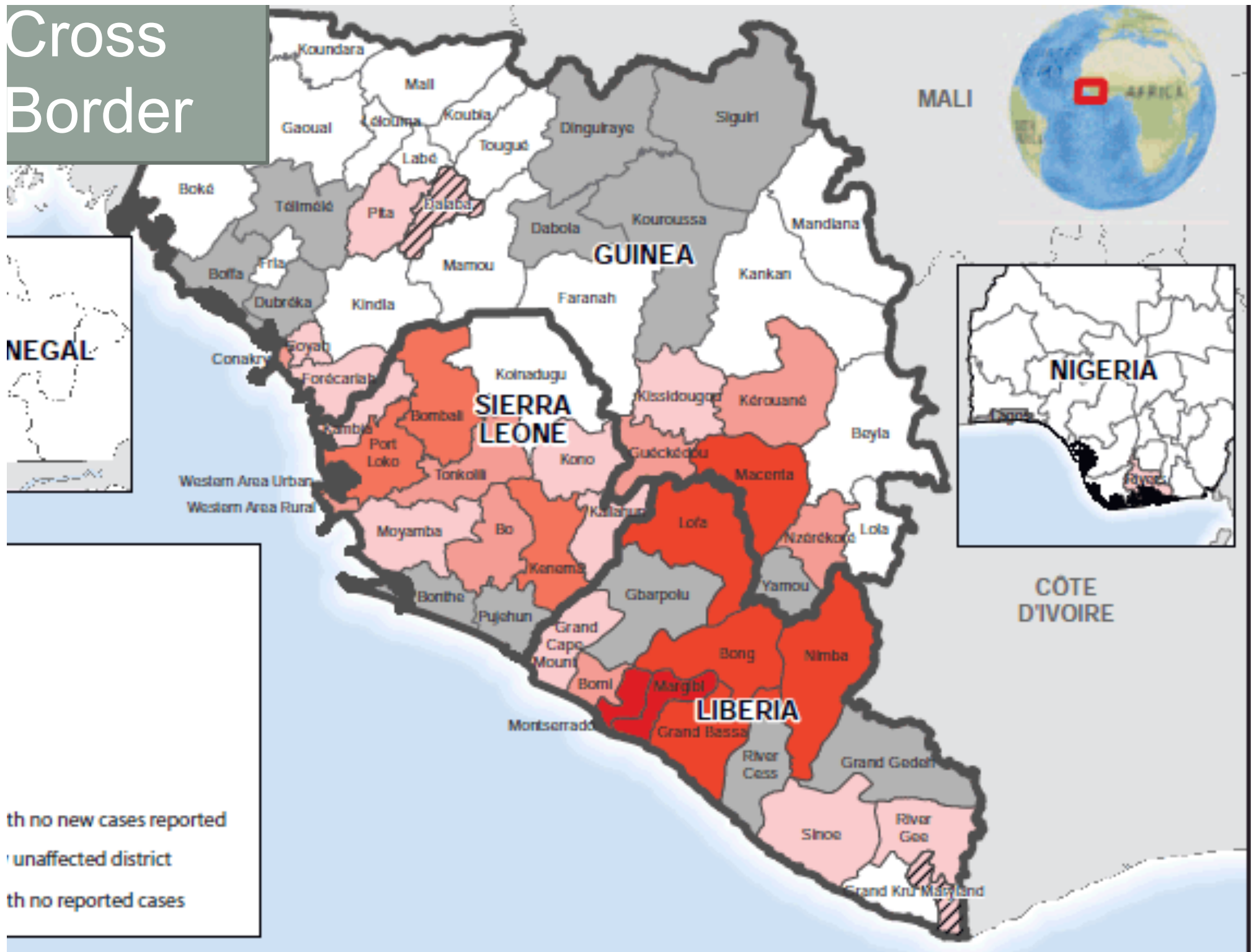
Comprehensive
information
management

Sustained
community
engagement

Leadership &
governance
capacity

Efficient Health
financing
systems

Cross Border



NEGAL

th no new cases reported
unaffected district
th no reported cases



EBOLA RESPONSE

Common Logistics Services

24 December 2014

Forward Logistics Bases

All operational with cargo (including US DoD ETU Kits)

Gbarnga → 6/6 MSUs erected; cargo
prepositioned

Zwedru → 6/6 MSUs erected; cargo
prepositioned

Voinjama → 6/6 MSUs erected;
cargo prepositioned

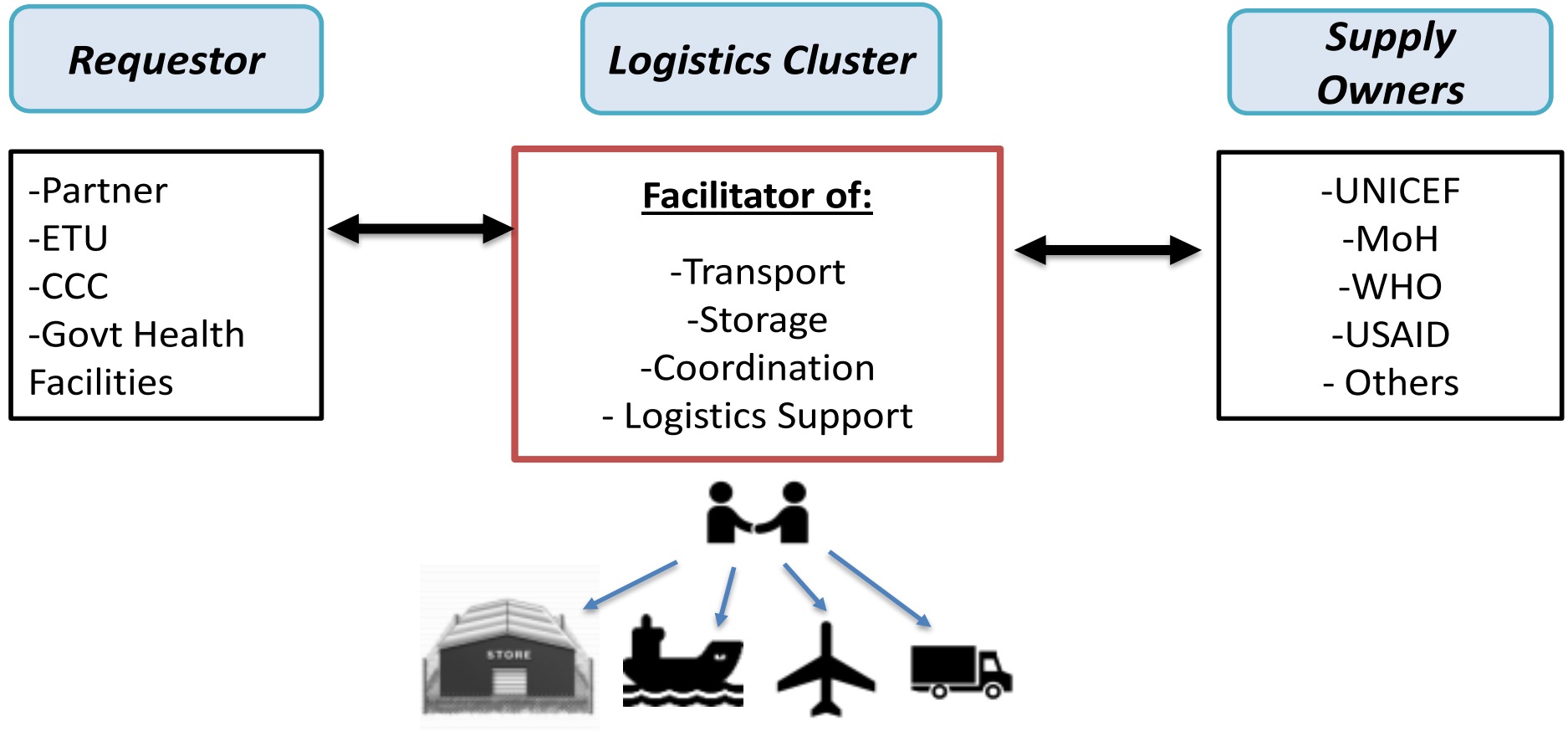
Buchanan → 5/6 MSUs erected;
cargo prepositioned

Harper → 4/4 MSUs erected; cargo
prepositioned





Log Cluster Role in Ebola Response Supply Chain



Constraints/Challenges

- *Quantifications of IPC commodities for EVD Supply Chain was based on assumptions due to the lack of available data*
- *The lack of good road network across the country hampers some timely distribution of IPC commodities*
- *Customs clearance challenges were on the increase creating backlog of cargo at the beginning but was later harmonize due to the intervention of the Government of Liberia.*

Lessons Learned

- 1. Integrated Drug and Commodities listing in fulfillment of an Emergency Preparedness and Response Agenda, thus, leading to a flexible health supply chain management systems with the capacity to provide essential support for the establishment of emergency supply chain in outbreaks.***
- 2. Essential holistic list for Liberia which capture 21 tracer commodities that derived from the EVD outbreak lesson***
- 3. Continuous coordination amongst partners, Private Sector and Government Actors,***
- 4. Prepositioning of stock at every level to ensure timely response***
- 5. Geographical mapping to set up regional hubs which is critical in preparation for response***
- 6. Timely supplies ahead of the rainy season is important so as to have sufficient stock available is vital at all levels to better prepare***
- 7. Though there are currently no case of EVD in Liberia but we still providing IPS Supplies to the Health facilities in the country on a quarterly basis***

A close-up photograph of a large assortment of pharmaceuticals, including various colored capsules (yellow, blue, red, pink, green, orange), tablets (white, yellow, blue, pink, orange), and a clear glass pill bottle. The pills are scattered across the frame, creating a dense and colorful background. An orange banner with the text "THANK YOU" is overlaid in the center.

THANK YOU