



**GLOBAL  
HEALTH**  
SUPPLY CHAIN SURVEY



# Thanks to our generous sponsors



CHEMONICS



**Logenix**  
International



**LMI**



**USAID**  
FROM THE AMERICAN PEOPLE

**resolve**  
Capacity



# Investing in the First Step:

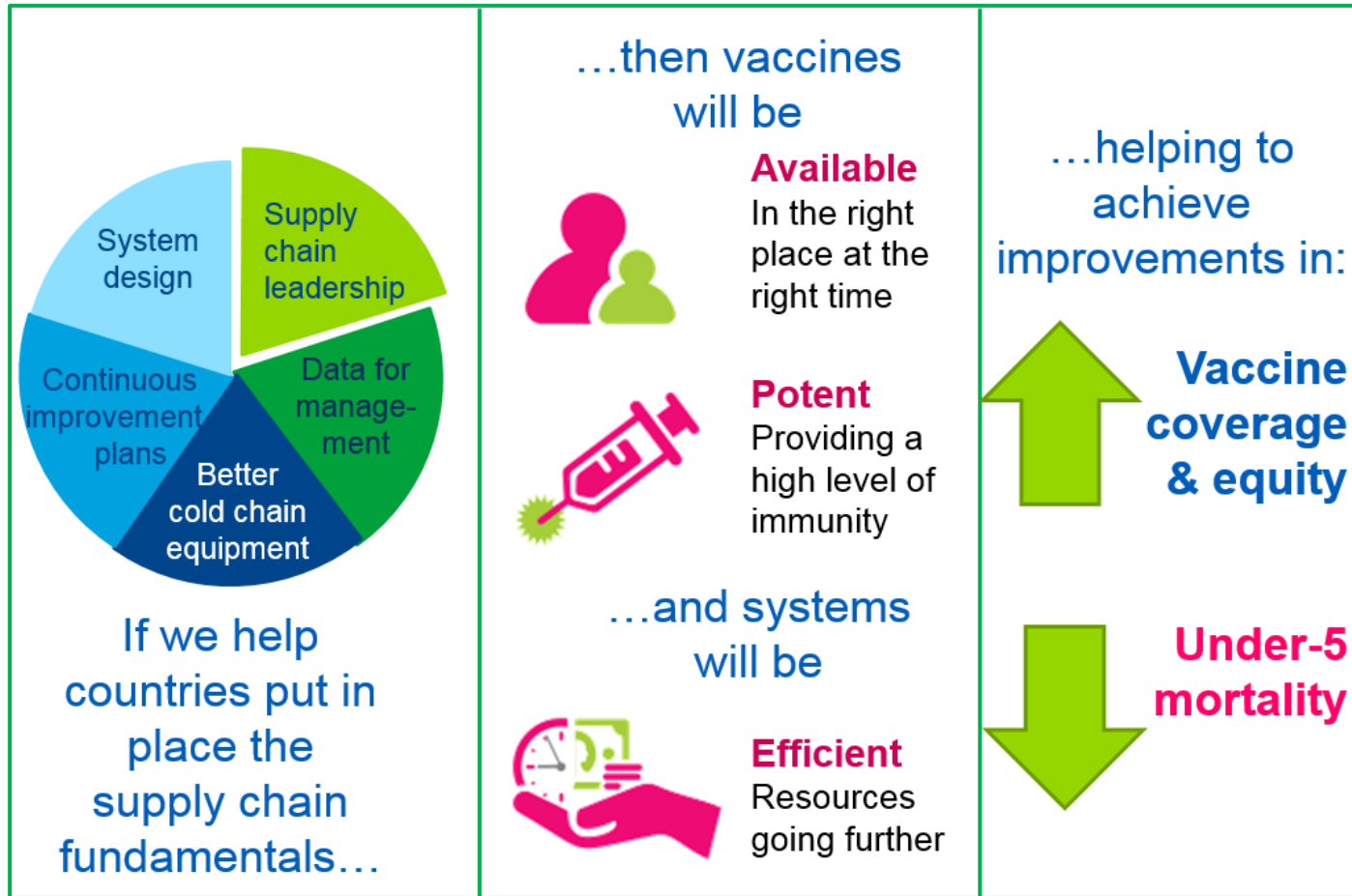
*Strategies for Engaging Stakeholders in a System Design Approach to Supply Chain Management*

Global Health Supply Chain Summit  
Dar es Salaam, Tanzania  
November, 2016

Ryan McWhorter, UNICEF  
Wendy Prosser, VillageReach

# Background

The Gavi Alliance has developed an Immunization Supply Chain Strategy that is built around 5 evidence based fundamentals



# System Design Working Group

Agencies

Donors

NGO's

Private Sector

Academic

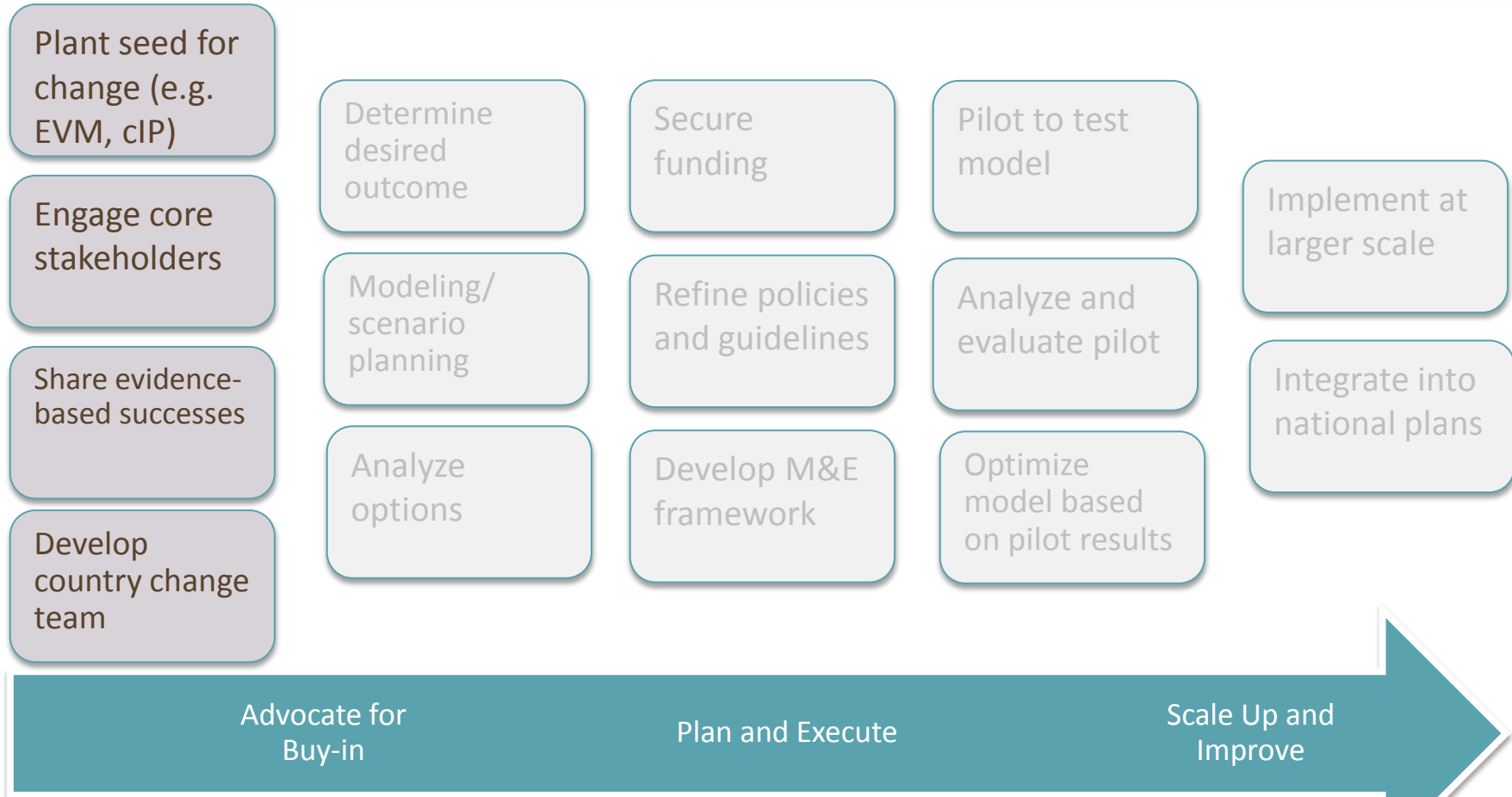


John Snow, Inc.



KU LEUVEN

# System Design 101



# System Design

- System design: a process which creates a plan or blueprint for how the end-to-end supply chain should operate
- Identifies how all of the components of the supply chain fit together and interact (transport network, storage, human resources, planning, monitoring, equipment, supervision, data, and leadership)

# What's Different?

- Make it the Government's project, data, decisions, and success
  - Educate participants about the role of the **entire supply chain system**
  - Create an environment for sharing and **questioning the status quo**
  - Facilitate, provide relevant **evidence**, listen, report back...don't dictate
  - Gain stakeholder and decision-maker **buy-in** by tying to programmatic objectives and priorities
- Illustrate that it's more than a single activity or project, it's a **long-term engagement**
  - Scope the analysis to manage expectations
  - Plan + cost the next step, not the end step
- System design can involve major changes or small shifts for a **continuous improvement approach**

# Looking at the entire supply chain system: Pakistan

- System design workshop used interactive discussions and activities to identify areas for improvement in immunization supply chain
- Participants identified potential scenarios to study the end-to-end supply chain, from point of entry to last mile delivery



# Leadership and the willingness to question the status quo: Zambia

- Participants considered reducing a level of the system and introducing direct delivery
- Strong support and leadership for system design from all levels of the health system
- Further supply chain analysis and modeling will provide evidence for decision making



# Evidence for decision making: Democratic Republic of Congo

- The Province of Equateur is looking to find improvements in the supply chain
- Computer simulation modeling and analysis will identify the benefits of different system designs and the trade-offs required to get a more reliable, efficient system



# Long-term engagement: Benin

- Benin used the results of computer simulation modeling to reduce a level of the vaccine supply chain
- Evidence from the informed push pilot showed significant improvements in performance
- Now scaling up across the country



# Continuous improvement, large and small: Mozambique

- The province of Gaza wanted to improve delivery to a hard-to-reach area
- Decision makers used results from computer simulation modeling to adapt the informed push model for two-month deliveries (instead of one-month), proving efficient and feasible.
- The ‘crazy idea’ of using two-month delivery intervals proved not to be crazy



# Barriers to Success?



**What are other barriers and  
how can we as a global  
community overcome them?**

# Thank you

**For more information:**

Ryan McWhorter, UNICEF, [rmcwhorter@unicef.org](mailto:rmcwhorter@unicef.org)

Wendy Prosser, VillageReach, [wendy.prosser@villagereach.org](mailto:wendy.prosser@villagereach.org)